

Lancashire & South Cumbria Primary Care Intranet

<https://primarycare.lancashireandsouthcumbria.nhs.uk/>

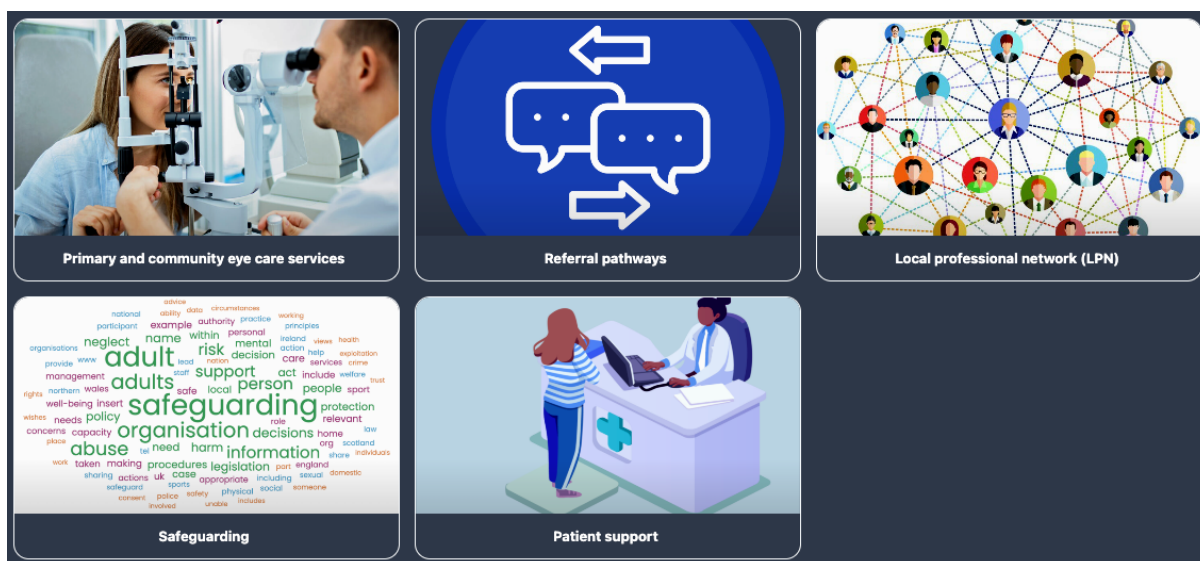
The intranet has been developed to enable the ICB to share important information with primary care contractors in all four pillars of primary care. Each section is being added to, developed, and improved over time.



Hopefully, the titles are self-explanatory. You may still find sub-sections that are unpopulated, awaiting content. If you have any feedback, email lscicb.pcnews@nhs.net

The intranet is one way the ICB aims to support your organisation by keeping our colleagues fully informed about the administration of contracts and the care pathways and services relevant to your practice. We also hope to raise awareness of the services available across wider primary care to promote integration across different contractor groups that care for our patients.

Optometry and eyecare

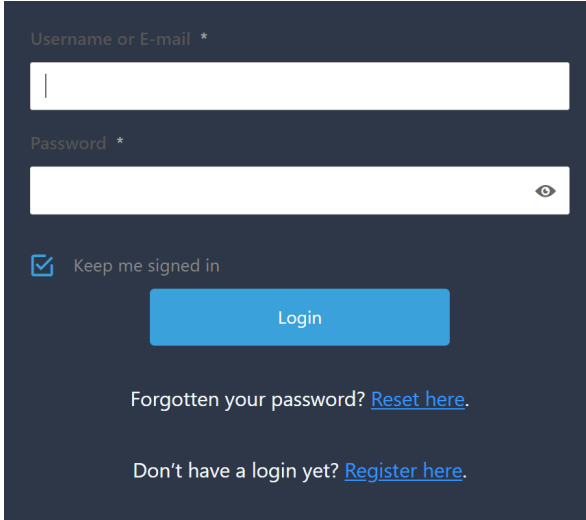


- **Primary and community eye care services**
Important information for all contractors and performers about:
GOS – including key contacts, reference documents, and forms.
Easy Eyecare – sight testing for people with learning disability
Sight tests for homeless people – contact point for more information
CUES – links and contacts at Primary Eyecare Services
Glaucoma referral filtering services – links and contacts at Primary Eyecare Services
Post-cataract assessments – links and contacts at Primary Eyecare Services
Low vision services – links and contacts at Primary Eyecare Services
Diabetic eye screening – contacts for the DESP screening providers
- **Referral pathways**
Currently linking to Local Optical Committee websites, but soon to include specific guidance information published by the ICB relating to referral from primary care optical practice to NHS-funded community and secondary care ophthalmology.
- **Local professional network**
Information and contact details for the LPN for Eye Health
- **Safeguarding**
About Safeguarding in L&SC and links to further resources to support you if you have a safeguarding concern about an adult or child.
- **Patient Support**
Locality-specific information about the services available for patients who need support due to their eye health: accurate and up-to-date links to local sight loss support resources.

Lancashire & South Cumbria Primary Care Intranet Access for eye health professionals

The primary care intranet page is available via this link:
<https://primarycare.lancashireandsouthcumbria.nhs.uk/>

When you first access the site you will need to register:



The screenshot shows a dark-themed login and registration form. It features two input fields: 'Username or E-mail *' and 'Password *'. Below the password field is a checkbox labeled 'Keep me signed in' which is checked. A blue 'Login' button is positioned below the checkbox. At the bottom of the form, there are two links: 'Forgotten your password? [Reset here.](#)' and 'Don't have a login yet? [Register here.](#)'

If you have an NHS Email address:

Click 'Register here' if you wish to use an email with **nhs.net** or **nhs.uk** suffix.
Enter your details. These addresses will be automatically approved for access.

If you do not have an NHS email:

Please write to lscicb.pcnews@nhs.net from the email address you wish to use, stating that you are an eye health professional and want to access the primary care intranet site. A colleague will set this up and reply to you as soon as possible.

After you register

You will receive an email inviting you to complete a form to update your mailing preferences. Please read and complete; you will automatically receive the GP Digest every week if you do not deselect this option, which may be a distraction if you do not work in general practice.

Feedback

If you have any comments or questions about content in the 'Optometry and eye care' section, then please email the LPN Chair for Eye Health on tom.mackley@nhs.net.