



Lancashire &
South Cumbria
PRIMARY CARE TRAINING HUB

STEP INTO PRIMARY CARE PROGRAMME



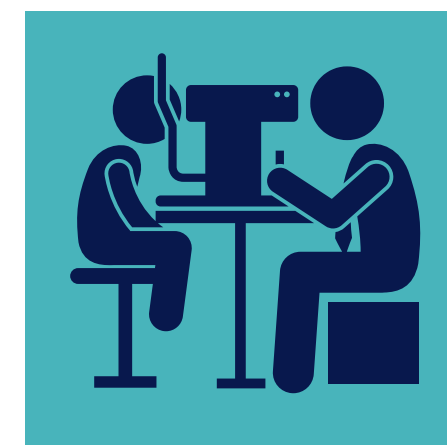
General
Practitioners



Dental
Services



Community
Pharmacy



Community
Optometry

INTRODUCTION & PROGRAMME OUTLINE

Introduction

Lancashire and South Cumbria Primary Care Training Hub (L&SC PCTH) in partnership with

- Department for Work and Pensions (DWP)
- PHX Training

developing a 6-week Step into Primary Care Programme for Primary Care organisations including

- General Practice
- Community Pharmacists
- Dental Surgeries
- Community Optometry

to utilise recruiting into non-clinical roles with the potential of progressing onto clinical apprenticeship roles within General Practice i.e. Student Nursing Associate or General Practice Assistant.

The overall aim of Step into Primary Care is to support candidates to develop employability skills and qualities in order to secure health and social care roles, through a blended approach of work placements and training which takes place over a fixed period of time



Lancashire &
South Cumbria
PRIMARY CARE TRAINING HUB

Programme Outline

This programme equips learners with a solid baseline on understanding of roles within primary care organisations. The programme is for candidates aged 18-30 years old and will consist of 3-weeks of accredited training via PHX Training and a 3-weeks practice placement in a non-clinical role.

3 weeks accredited training:

- Tailored training to meet the needs of the organisation
- Customer Service Award Level 1, Mental Health Awareness Level 1, Safeguarding and Prevent Level 2
- Difficult Conversation Training
- eLearning for Health Mandatory Training
- 90 minutes EMIS training
- NHS Values Overview
- A Persons Holistic Journey through Health and Social Care
- Tutor feedback provided to each practice

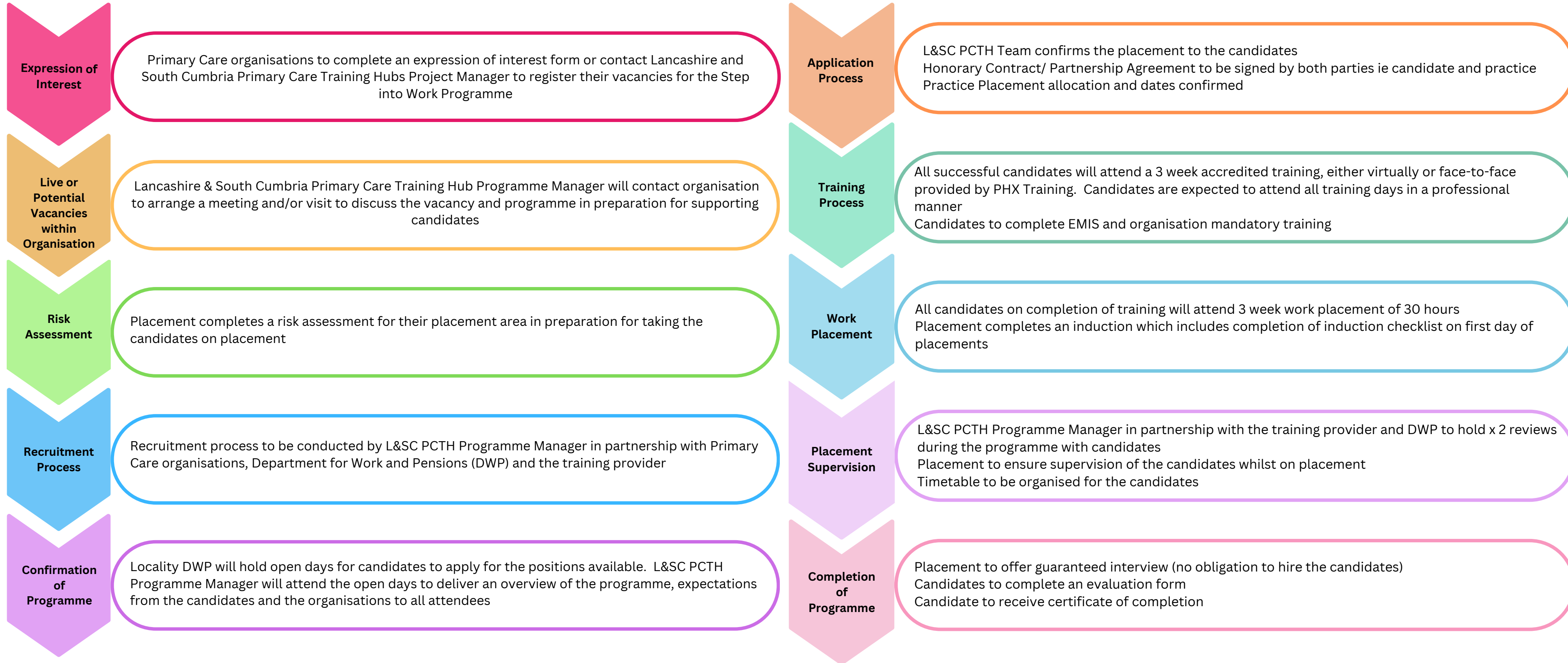
3 weeks practice placement:

- Candidates have the opportunity to experience working in a Primary Care organisation
- 2 week review
- Candidates must have a guaranteed interview for a job role within the organisation once placement is complete (no obligation for the organisation to hire candidates)

Week 1	Training
18th & 19th November 2024	Enrolment Days Initial Assessments including Maths, English and ICT skills Skills Scan (current skills)
21st November 2024	Introduction to the Programme What is Primary Care - A Persons Holistic Journey Through Health and Social Care What roles are available at entry-level within Primary Care and progression NHS Track PHX Accredited Training Customer Service Level 1 <ul style="list-style-type: none"> • Unit 1 Customer Service Principles • Unit 2 Understanding How to Work in a Customer Service Role
Week 2 & 3	PHX Accredited Training Mental Health Level 1 <ul style="list-style-type: none"> • Unit 1 Award in Mental Health Awareness Mid Point Reviews held with tutor, candidate & Sam Jefferies Safeguarding Level 1 <ul style="list-style-type: none"> • Unit 1 Understanding the Prevent Duty • Unit 2 Understanding Safeguarding • Unit 3 Understanding Online Safety CV Building and Interview Techniques EMIS Training eLearning for Health modules Difficult Conversation Training Skills Scan (Progress)
16th December 2024	Week 1 of work placement for 2 candidate's
6th January 2025	Week 2 of Work Placement for 2 candidate's
13th January 2025	Week 3 of work placement for 2 candidate's & guaranteed interview (no obligation to hire)

6 week Step Into Primary Care Overview

Flow Chart for the Development and Delivery of Step into Primary Care Programme



Thank you



samanthajefferies4@nhs.net